

Location:



T2000-PB with No Edge Rail

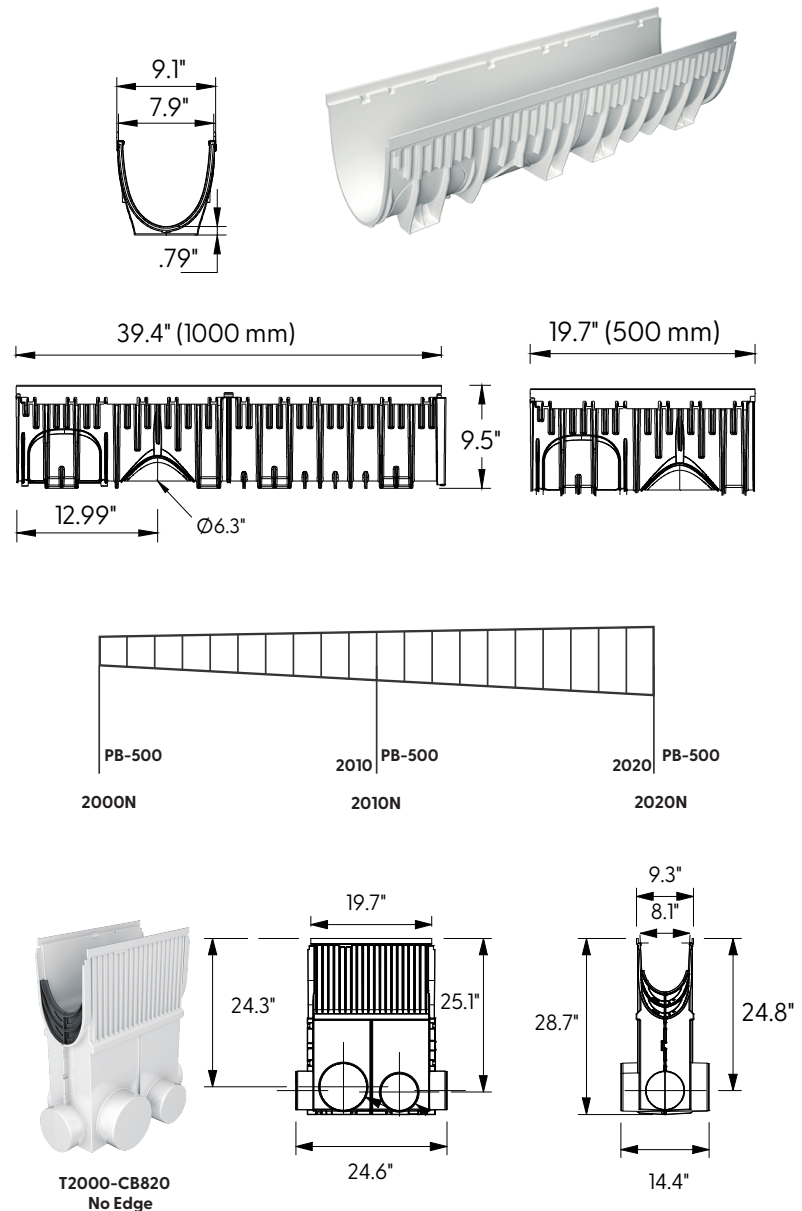


Specification:

MIFAB®'s T2000-PB series channels shall be 39.4" (1000 mm) long with a 8" (200 mm) internal width and radius bottom. Interconnecting channel sections are made of high strength Glass Fiber Reinforced Polyester (GRP) and available in sloping (0.5%) and non-sloping (neutral) channels. Each channel comes with no edge rail. Directional Change Channels available at neutral locations.

Installation devices, plastic end cap/outlet cap, catch basins and bottom outlets are available accessories. Grates (separate Specification Sheets) are available in in Load Class A-C in a variety of materials. Grates utilize the patented "Clipfix" locking mechanism.

CHANNEL Model No.	BODY TYPE Sloped ~ .5% Neutral - 0%	INVERT BODY DEPTH E1 Min. E2 Max.	OVERALL BODY DEPTH E1 Min. E2 Max.	MAXIMUM FLOW RATE GPM	WEIGHT (LESS GRATE) Lbs.
T2000N-PB	Neutral	8.74" 8.74"	9.53" 9.53"	1409.69	13.23
T2000N-PB-500	Neutral	8.74" 8.74"	9.53" 9.53"	1409.69	7.39
T2000N-PB-500-DC	Neutral	8.74" 8.74"	9.53" 9.53"	1409.69	7.39
T2001-PB	Sloped	8.74" 8.93"	9.53" 9.73"	1730.70	13.36
T2002-PB	Sloped	8.93" 9.13"	9.73" 9.93"	1730.70	13.52
T2003-PB	Sloped	9.13" 9.33"	9.93" 10.12"	1730.70	13.69
T2004-PB	Sloped	9.33" 9.53"	10.12" 10.32"	1730.70	13.86
T2005-PB	Sloped	9.53" 9.72"	10.32" 10.52"	1730.70	14.03
T2006-PB	Sloped	9.72" 9.92"	10.52" 10.71"	1730.70	14.19
T2007-PB	Sloped	9.92" 10.12"	10.71" 10.91"	1730.70	14.36
T2008-PB	Sloped	10.12" 10.31"	10.91" 11.11"	1730.70	14.53
T2009-PB	Sloped	10.31" 10.51"	11.11" 11.30"	1730.70	14.70
T2010-PB	Sloped	10.51" 10.71"	11.30" 11.50"	1730.70	14.86
T2010N-PB	Neutral	10.71" 10.71"	11.50" 11.50"	2065.66	15.65
T2010N-PB-500	Neutral	10.71" 10.71"	11.50" 11.50"	2065.66	7.83
T2010N-PB-500-DC	Neutral	10.71" 10.71"	11.50" 11.50"	2065.66	7.83
T2011-PB	Sloped	10.71" 10.90"	11.50" 11.70"	2407.63	15.03
T2012-PB	Sloped	10.90" 11.10"	11.70" 11.89"	2407.63	15.20
T2013-PB	Sloped	11.10" 11.30"	11.89" 12.09"	2407.63	15.37
T2014-PB	Sloped	11.30" 11.49"	12.09" 12.29"	2407.63	15.53
T2015-PB	Sloped	11.49" 11.69"	12.29" 12.49"	2407.63	15.70
T2016-PB	Sloped	11.69" 11.89"	12.49" 12.68"	2407.63	15.87
T2017-PB	Sloped	11.89" 12.08"	12.68" 12.88"	2407.63	16.04
T2018-PB	Sloped	12.08" 12.28"	12.88" 13.08"	2407.63	16.20
T2019-PB	Sloped	12.28" 12.48"	13.08" 13.27"	2407.63	16.37
T2020-PB	Sloped	12.48" 12.67"	13.27" 13.47"	2407.63	16.54
T2020N-PB	Neutral	12.67" 12.67"	13.47" 13.47"	2623.94	17.50
T2020N-PB-500	Neutral	12.67" 12.67"	13.47" 13.47"	2623.94	8.75
T2020N-PB-500-DC	Neutral	12.67" 12.67"	13.47" 13.47"	2623.94	8.75



CLIPFIX ADVANTAGE

The MEA Glass Fiber Reinforced Polyester (GRP) channels have been designed for our universal CLIPFIX grate locking mechanism. The system (channel and grate) provides longitudinal shift protection.

T2000-CB820
No Edge

6" OUTLET CATCH BASIN
(8" OUTLET ALSO AVAILABLE)
Sediment bucket included

Supplied By:

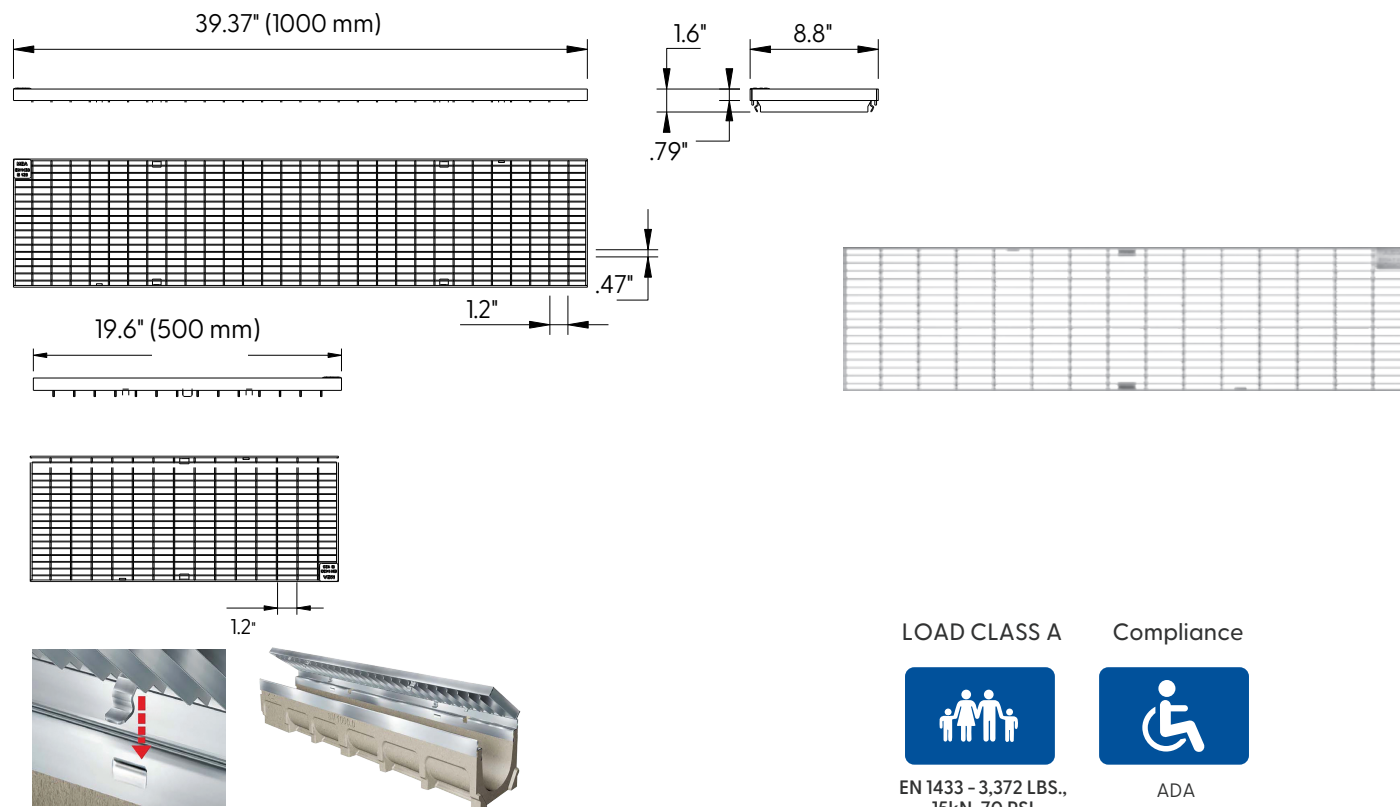


Revision Date: 2022-02-16

CALIFORNIA PROPOSITION 65 WARNING. This product contains chemicals known to the State of California to cause cancer and birth defects or other reproductive harm.

Galvanized Steel Mesh Grate to suit 8" clear opening channels

Specification: T200-PGA-13-GM galvanized steel mesh grates are independently certified to meet Load Class A tested in accordance with EN 1433 (3,372 lbs (15kN)). The grate length is 39.37" (1 m). The grates utilize the patented "Clipfix" grate locking mechanism. The system (channel and grate) provides longitudinal shift protection. Optional 19.69" (0.5m) grates are also available in Load Class A (Part # T200-PGA-13-GM-500).



CLIPFIX ADVANTAGE

The MEA polymer concrete and GRP channels are designed for our universal CLIPFIX grate locking mechanism. The system (channel and grate) provides longitudinal shift protection.

LOAD CLASS A

Compliance



EN 1433 - 3,372 LBS.,
15kN, 70 PSI



ADA

GRATE MODEL NUMBER	LENGTH	USED WITH
T200-PGA-13-GM	39.37" (1000 mm)	T1700 Concrete Channel
T200-PGA-13-GM-500	19.69" (500 mm)	T1700 Concrete Channel
TP200-PGA-13-GM	39.37" (1000 mm)	T2000 Plastic Channel or T1360 Aluminum Channel
TP200-PGA-13-GM-500	19.69" (500 mm)	T2000 Plastic Channel or T1360 Aluminum Channel

Supplied By:
**TRENCH DRAIN
SUPPLY**
877-903-7246
www.trenchdrainsupply.com

Job Name: _____

Page No: _____

Section No: _____

Contractor: _____

Schedule No: _____

Purchase Order No: _____

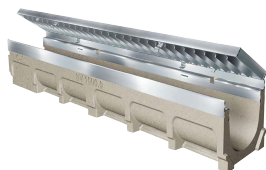
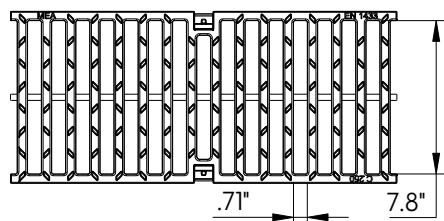
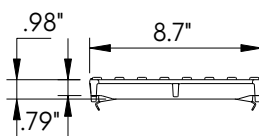
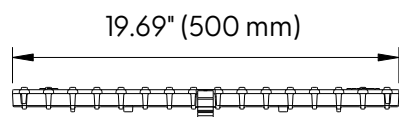
Location:



Ductile Iron Slotted Grate to suit 8" clear opening channels



Specification: T200-PGC-4 ductile iron grates are independently certified to meet Load Class C tested in accordance with EN 1433 56,200 lbs. 250kN. The grate length is 19.69" (.5 m). The grates utilize the patented "Clipfix" grate locking mechanism. The system (channel and grate) provides longitudinal shift protection.



CLIPFIX ADVANTAGE

The MEA polymer concrete and GRP channels are designed for our universal CLIPFIX grate locking mechanism. The system (channel and grate) provides longitudinal shift protection.

LOAD CLASS C



EN 1433 - 56,200 LBS.,
250kN, 1160 PSI

GRATE MODEL NUMBER	LENGTH	USED WITH
T200-PGC-4	19.69" (500 mm)	T1700 Concrete Channel
TP200-PGC-4	19.69" (500 mm)	T2000 Plastic Channel or T1360 Aluminum Channel

Supplied By:

**TRENCH DRAIN
SUPPLY**
877-903-7246
www.trenchdrainsupply.com

Job Name: _____

Page No: _____

Section No: _____

Contractor: _____

Schedule No: _____

Purchase Order No: _____

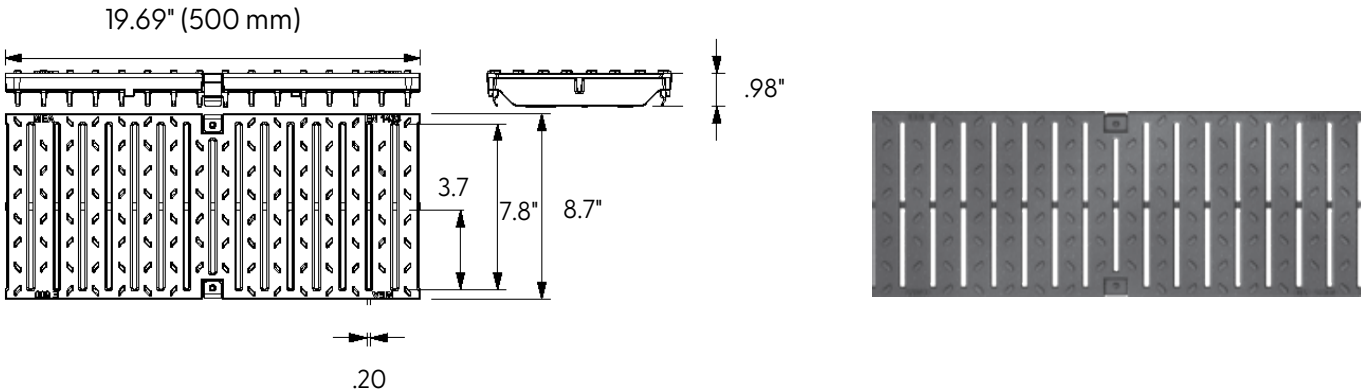
Location:



Ductile Iron Slotted Heelproof Grate
to suit 8" clear opening channels



Specification: T200-PGC-4-HP ductile iron slotted heelproof grates are independently certified to meet Load Class C tested in accordance with EN 1433 56,200 lbs. 250kN. The grate length is 19.69" (.5 m). The grates utilize the patented "Clipfix" grate locking mechanism. The system (channel and grate) provides longitudinal shift protection.



CLIPFIX ADVANTAGE

The MEA polymer concrete and GRP channels are designed for our universal CLIPFIX grate locking mechanism. The system (channel and grate) provides longitudinal shift protection.

LOAD CLASS C



EN 1433 – 56,200 LBS.,
250kN, 1160 PSI

Compliance



HEELPROOF

GRATE MODEL NUMBER	LENGTH	USED WITH
T200-PGC-4-HP	19.69" (500 mm)	T1700 Concrete Channel
TP200-PGC-4-HP	19.69" (500 mm)	T2000 Plastic Channel or T1360 Aluminum Channel

Supplied By:
**TRENCHDRAIN
SUPPLY**
877-903-7246
www.trenchdrainsupply.com

Job Name: _____

Page No: _____

Section No: _____

Contractor: _____

Schedule No: _____

Purchase Order No: _____

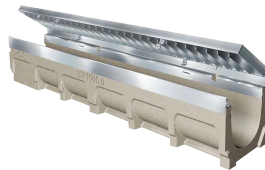
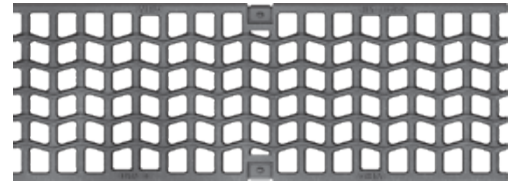
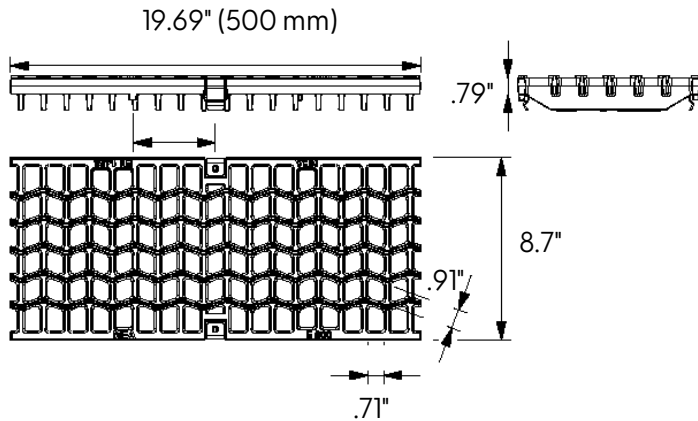
Location:



Ductile Iron Wave Grate to suit 8" clear opening channels



Specification: T200-PGC-WVY ductile iron grates are independently certified to meet Load Class C tested in accordance with EN 1433 56,200 lbs. 250kN. The grate length is 19.69" (.5 m). The grates utilize the patented "Clipfix" grate locking mechanism. The system (channel and grate) provides longitudinal shift protection.



CLIPFIX ADVANTAGE

The MEA polymer concrete and GRP channels are designed for our universal CLIPFIX grate locking mechanism. The system (channel and grate) provides longitudinal shift protection.

LOAD CLASS C



EN 1433 - 56,200 LBS.,
250kN, 1160 PSI

GRATE MODEL NUMBER	LENGTH	USED WITH
T200-PGC-WVY	19.69" (500 mm)	T1700 Concrete Channel
TP200-PGC-WVY	19.69" (500 mm)	T2000 Plastic Channel or T1360 Aluminum Channel

Supplied By:

**TRENCHDRAIN
SUPPLY**

877-903-7246

www.trenchdrainsupply.com

Job Name: _____

Page No: _____

Section No: _____

Contractor: _____

Schedule No: _____

Purchase Order No: _____

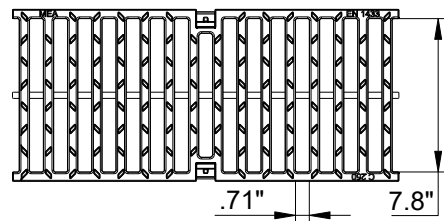
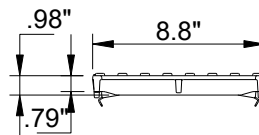
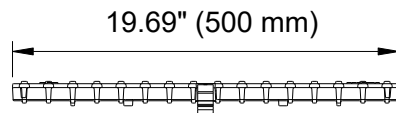
CALIFORNIA PROPOSITION 65 WARNING. This product contains chemicals known to the State of California to cause cancer and birth defects or other reproductive harm.

Location:



Ductile Iron Slotted Grate to suit 8" clear opening channels

Specification: T200-PGE-4 ductile iron slotted grates are independently certified to meet Load Class E tested in accordance with EN 1433 134,800 lbs. 600kN. The grate length is 19.69" (.50 m). The grates utilize the patented "Clipfix" grate locking mechanism. The system (channel and grate) provides longitudinal shift protection.



CLIPFIX ADVANTAGE

The MEA polymer concrete and GRP channels are designed for our universal CLIPFIX grate locking mechanism. The system (channel and grate) provides longitudinal shift protection.

LOAD CLASS E



EN 1433 -
134,800 LBS.,
600kN, 2,785 PSI

Supplied By:
**TRENCHDRAIN
SUPPLY**
877-903-7246
www.trenchdrainsupply.com

GRATE MODEL NUMBER	LENGTH
T200-PGE-4	19.69" (500 mm)

Job Name: _____

Page No: _____

Section No: _____

Contractor: _____

Schedule No: _____

Purchase Order No: _____

Revision Date: 2023-02-07

CALIFORNIA PROPOSITION 65 WARNING. This product contains chemicals known to the State of California to cause cancer and birth defects or other reproductive harm.

MIFAB reserves the right to make changes in material and design without formal notice and obligation.

USA: 1-800-465-2736 www.mifab.com CAN: 1-800-387-3880

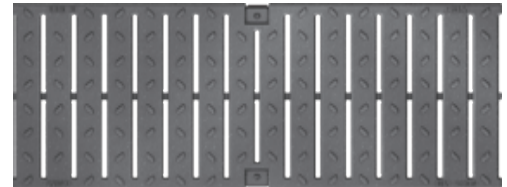
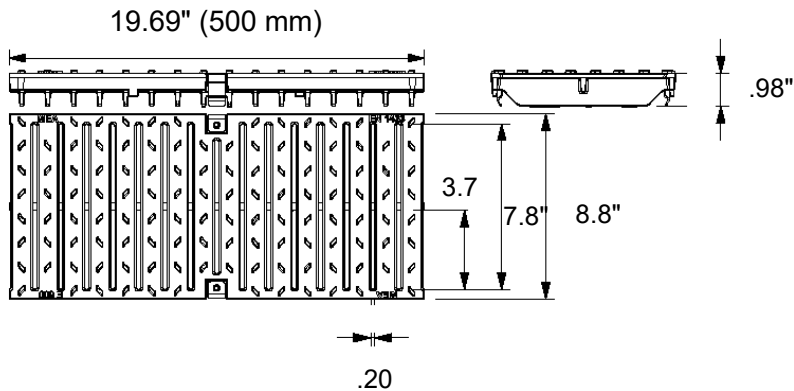
Location:



Ductile Iron Heelproof Slotted Grate to suit 8" clear opening channels



Specification: T200-PGE-4-HP ductile iron heelproof slotted grates are independently certified to meet Load Class E tested in accordance with EN 1433 134,800 lbs., 600 kN. The grate length is 19.69" (.50 m). The grates utilize the patented "Clipfix" grate locking mechanism. The system (channel and grate) provides longitudinal shift protection.



CLIPFIX ADVANTAGE

The MEA polymer concrete and GRP channels are designed for our universal CLIPFIX grate locking mechanism. The system (channel and grate) provides longitudinal shift protection.

LOAD CLASS E



EN 1433 -
134,800 LBS.,
600kN, 2,785 PSI

Compliance



HEELPROOF

Supplied By:
**TRENCHDRAIN
SUPPLY**
877-903-7246
www.trenchdrainsupply.com

GRATE MODEL NUMBER	LENGTH
T200-PGE-4-HP	19.69" (500 mm)

Job Name: _____

Page No: _____

Section No: _____

Contractor: _____

Schedule No: _____

Purchase Order No: _____

Revision Date: 2023-02-07

CALIFORNIA PROPOSITION 65 WARNING. This product contains chemicals known to the State of California to cause cancer and birth defects or other reproductive harm.

MIFAB reserves the right to make changes in material and design without formal notice and obligation.

USA: 1-800-465-2736 www.mifab.com CAN: 1-800-387-3880